



The Water in the Landscape Fund 2025

Creating resilient chalk catchments and protecting chalk streams

Hello,

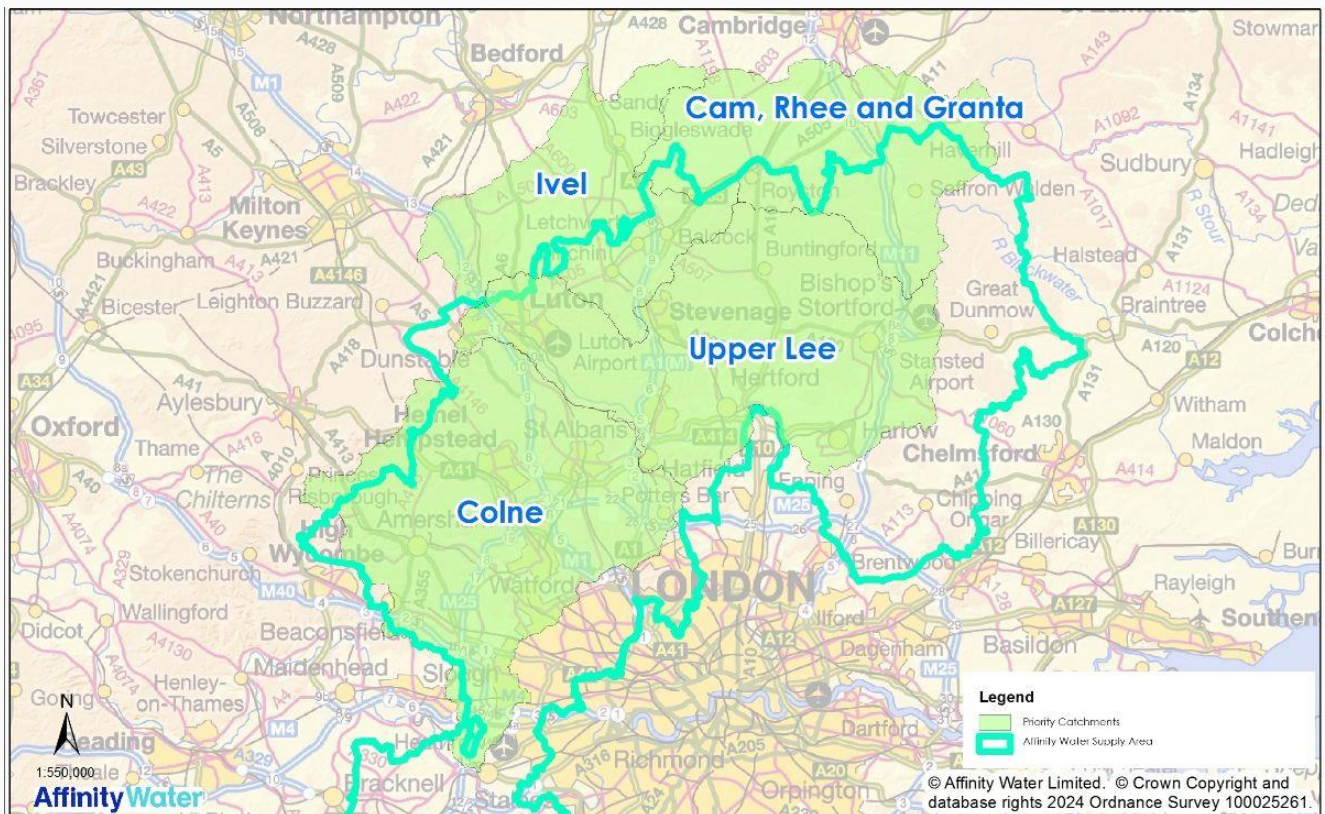
We're pleased to announce the launch of Affinity Water's new **Water in the Landscape** fund for 2025.

Our vision is to create more resilient chalk catchments and flourishing chalk stream habitat across our supply area. The Water in the Landscape fund will provide financial support to landowners, farmers, businesses and organisations looking to implement projects which use nature to slow the flow of water over land to ease flooding and erosion, improve soil health for water infiltration and reduce runoff into watercourses, with the aim to make lasting change across the landscape.

We're looking to fund projects which use natural processes to protect, conserve and restore local habitats that provide wider ecosystem services such as improved water quality, water quantity, climate change regulation and biodiversity.

We've sent you this email today because you are associated with land within a priority catchment where we're looking to support catchment and nature-based solutions across the landscape.

Please see the map of eligible catchment areas below. If you have land within this shaded green area, you're eligible to apply for the Water in the Landscape fund.



As a water company, we're dedicated to meeting our Environment Policy and have a duty to meet targets set out in the Water Industry National Environment Programme (WINEP), in addition to focussing more broadly on national goals outlined in the Environment Act*.

We're therefore inviting applicants within the scheme area above to submit project ideas for funding. Any successful nature-based projects delivered through this scheme will help us to create resilient catchments, protect water supplies, enhance the environment and chalk stream habitat, and improve soil health.

How to apply for funding

To apply for the Water in the Landscape fund, please complete your [online application form here](#).

[Apply here](#)

More info

- Please complete all sections of the application form and let us know as much detail as you can at this stage. Supplementary information can be provided via email prior to the closing date.
- You may wish to provide a summary of your project or any supplementary information using a different format (such as a short video clip). We welcome this as part of your application form.
- In this first year of the scheme, successful applications may be awarded **a grant of up to a maximum of £15,000 per project**. If you have a proposal for a larger landscape scale project which requires more funding, we'd like to encourage applicants to still apply for this grant fund

and provide as much detail as possible and we'll be in contact to discuss the possibility of funding over multiple years.

Applications close at 23:59 on Monday 14th July 2025

Please note, this fund will be a competitive process and financial support is not guaranteed. All submitted applications will be assessed by a panel of water industry specialists for the potential natural capital and ecosystem services benefits. The location to watercourses and recharge zones for groundwater will also be considered when making funding decisions. Those projects deemed most beneficial will be prioritised if the funding budget for 2025 is exceeded.

We're aiming to inform you by the **30th July 2025** if your application has been successful. More details are shown in the [online application form](#).

Thank you for your interest in the Water in the Landscape Fund. We look forward to receiving your application.

If you have any questions about this scheme or would like to speak to a catchment advisor about a potential idea, please feel free to contact catchmentmanagement@affinitywater.co.uk to request a call.

Kind regards,

The Affinity Water Catchment Team